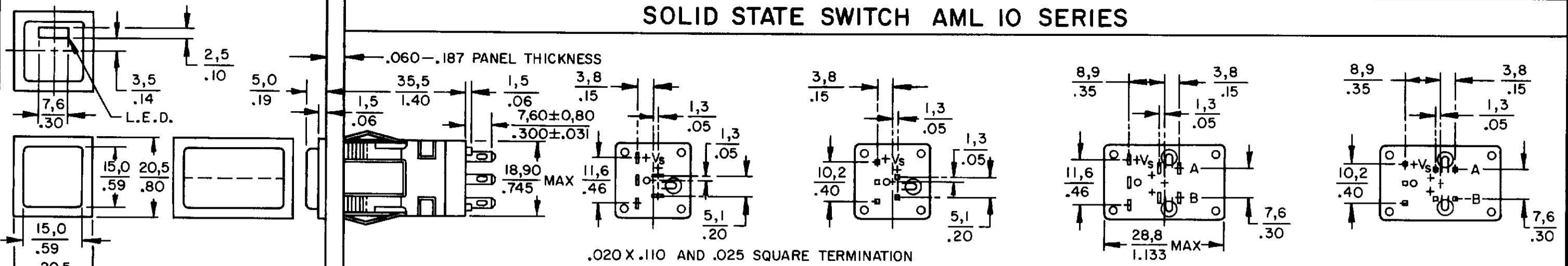
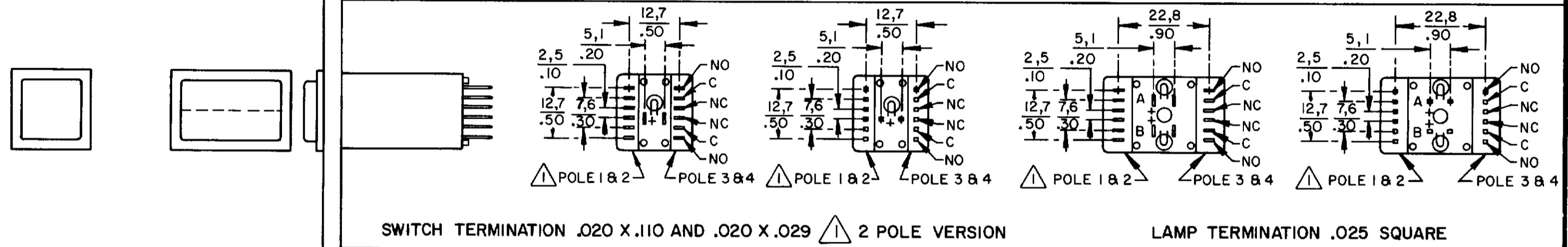
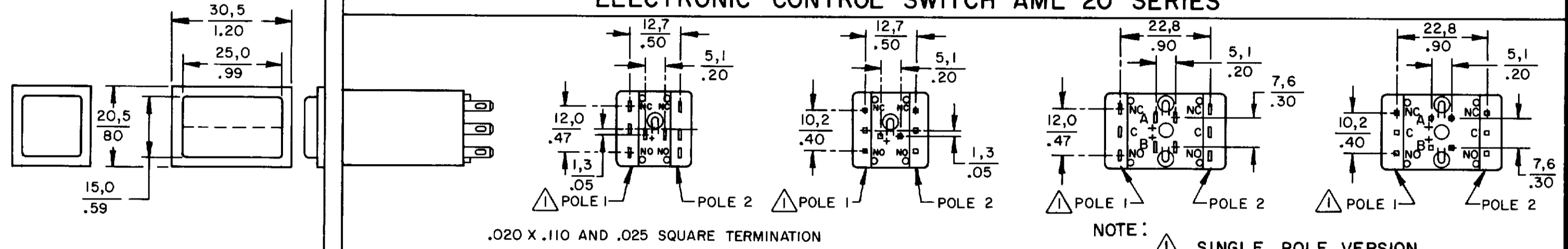


AML PUSHBUTTON AND INDICATOR SERIES

SOLID STATE SWITCH AML 10 SERIES

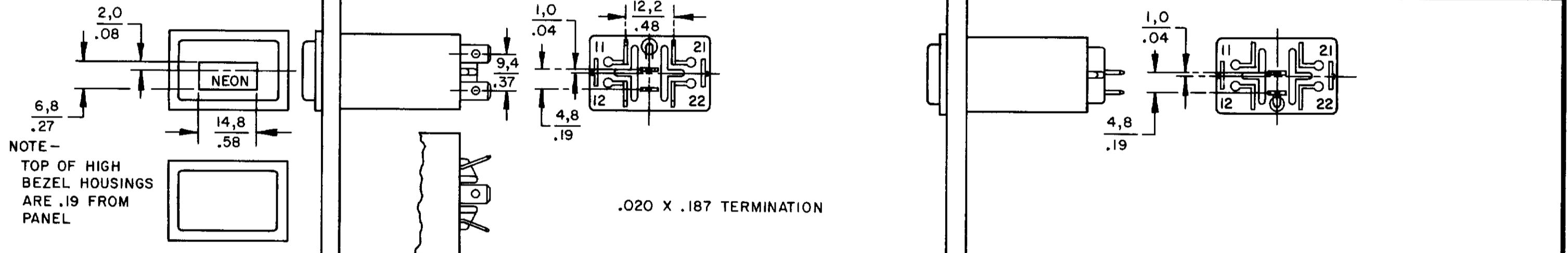


ELECTRONIC CONTROL SWITCH AML 20 SERIES

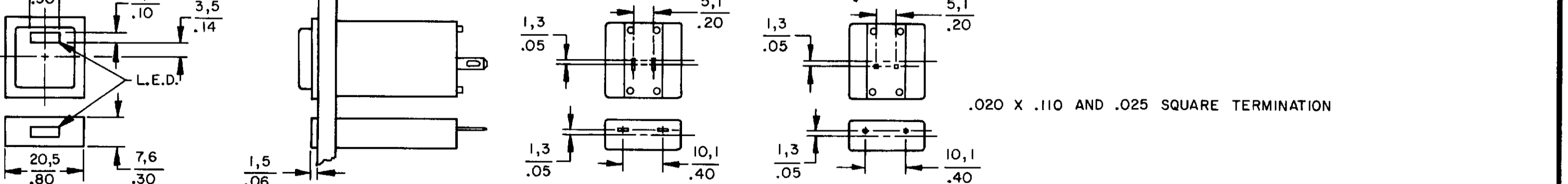
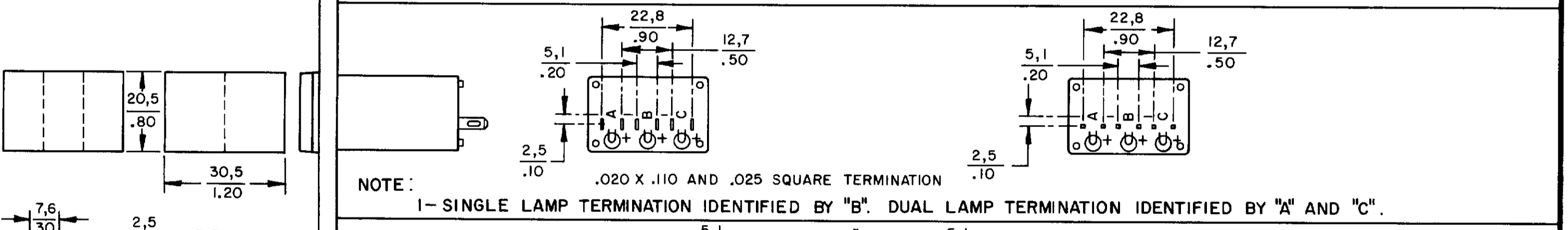
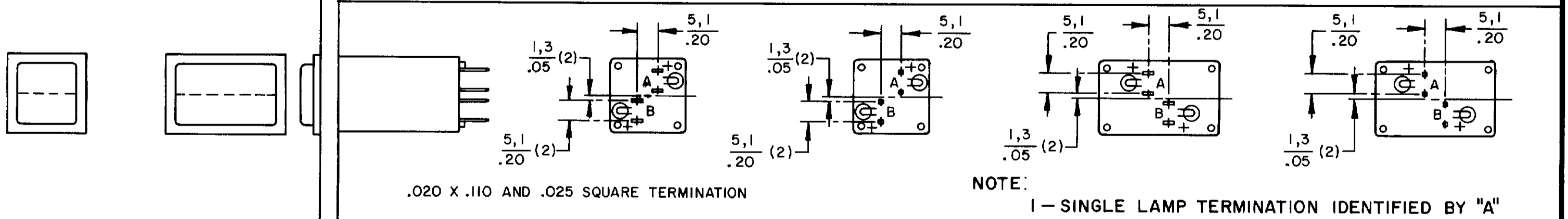


POWER SWITCH AML 30 SERIES

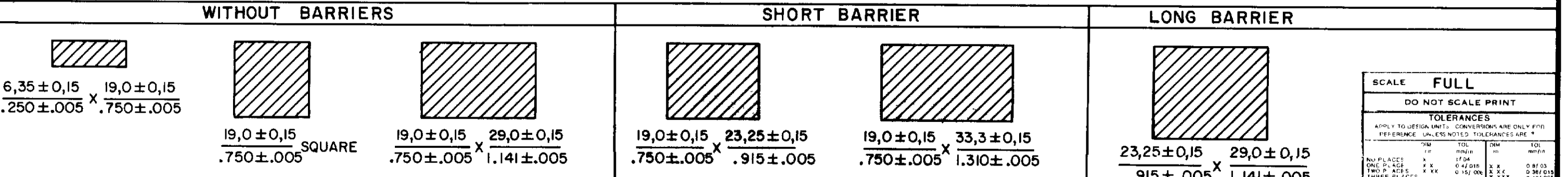
LINE POWER IND AML 43 SERIES



INDICATORS AML 40 SERIES



PANEL CUTOUTS



MASTER REDUCED

THIS DRAWING COVERS A PROPRIETARY ITEM AND IS THE PROPERTY OF MICRO SWITCH A DIVISION OF HONEYWELL. THIS DRAWING IS NOT TO BE COPIED OR USED WITHOUT THE APPROVAL OF MICRO SWITCH

MICRO SWITCH
a Honeywell Division

AML PUSHBUTTONS & INDICATORS

CATALOG LISTING
AML 10 20 30 40
SERIES CHART 1

FED. MFG CODE 9122

SCALE FULL	
DO NOT SCALE PRINT	
TOLERANCES	
APPLY TO DESIGN UNITS. CONVERSIONS ARE ONLY FOR REFERENCE. UNLESS NOTED, TOLERANCES ARE:	
FRAMES	±.005
NO PLACES	±.005
ONE PLACE	±.005
TWO PLACES	±.005
THREE PLACES	±.005
ANGLES	±.005
DESIGN UNITS	DI METRIC <input type="checkbox"/> US CUSTOMARY <input type="checkbox"/>
THIRD ANGLE PROJECTION	
WEIGHT	

CATALOG LISTING
AML 10 20 30 40
 PAGE 1 OF 1 SERIES CHART 1
 RELEASE NO. CO-78498 REPLACES & 40 SERIES
 ISSUE 6
 REVISIONS
 A 209297
 B 201477
 C 201566
 D 201696
 E 202971
 30 APR 01
 DRAWN JAK
 CHECK JAF 11 JUL 04
 17 JUN 94
 RASTER